

TCXO

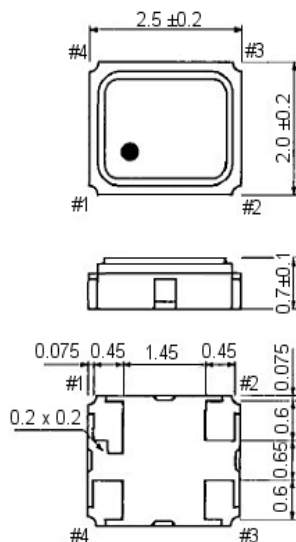
SMD-version

+2.5 / +2.8 / +3.0V

Temperature Compensated Crystal Oscillator

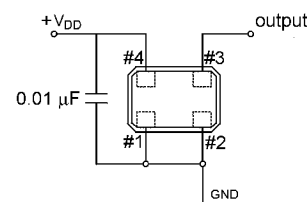
model	KXO-86
frequency range	12.0 ~ 26.0 MHz
Initial frequency tolerance	±1,5ppm max. (Vcon = +1,35V DC at +25±2°C)
frequency stability temperature range input voltage change output load change aging	±2,5ppm over -30°C ~ +75°C (referred to +25°C) ±0,2ppm max. at V _{DD} ±5% DC ±0,2ppm max. at 10kΩ ±10% with 10 pF ±10% ±1,0ppm max. / year at +25°C ±2°C
operating conditions operating temperature input voltage (V _{DD})	-30°C ~ +75°C (standard) +2.5 V, +2.8V, +3.0V DC ±5%
storage temperature	-40°C ~ +85°C
input current	1.5 mA max.
output level load waveform	0.8Vp-p min. at 10kΩ/10 pF 10k Ω ±10% // 10 pF ± 10% clipped sine wave (DC-coupling)
phase noise	-130 dBc/Hz at 1 kHz offset
reflow frequency change	± 1.0ppm at 24H after reflow (at +25°C ± 2°C)
start up time	3 mS max. (V _{out} ≥ 90% V _{p-p}) 4 mS max. (within ±2,5ppm)
reflow soldering condition	+250°C ±10°C for 10 seconds, see diagram
contents of reel	2000 pcs.
part no.	12.xxxxx

Dimensions (mm):

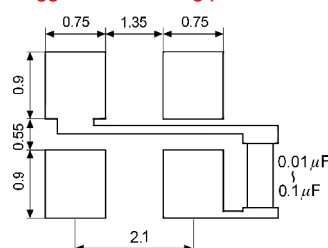


PIN	Connection
1	GND
2	GND
3	OUTPUT
4	V _{DD}

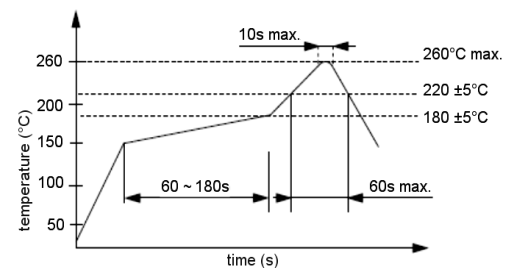
Test circuit:



Suggested soldering pad:



Reflow soldering condition:



Tape specification:

